



ERGONOMIC ACCESSORIES

VIKING

THE ERGONOMIC FURNITURE COMPANY

Solving design problems while delivering added comfort.

SMART DESIGN

MEANS INCREASED PRODUCTIVITY



As you look around, it's easy to see that the human body comes in many shapes and sizes, which creates the need for products that provide a high level of adjustability to provide comfort for each individual. Adjustability is the key to providing a safe and productive work environment throughout the day. What's right for one person may not be right for another, so we've designed our products to provide a full range of motion that will accommodate the majority of people wherever they work.

ERGONOMIC ACCESSORIES THAT SOLVE DESIGN PROBLEMS WHILE DELIVERING ADDED COMFORT FOR EMPLOYEES.



Keyboard Systems 2 • 3



Keyboard Mechanisms 4 • 5



Platforms 6 • 7



Keyboard Drawers 8 • 9



Mousing Options 10 • 11



CPU Holders 12 • 13



Laptop Solutions 14 • 15



Flat Panel Monitor Arms 16 • 22



Task Lights 23



Foot Rests 24



Corner Makers 25



Copy Holders 26



Pencil Drawers 27



Wrist/Mouse Pads 28

Terms and Conditions 29



KEYBOARD SYSTEMS

WITH OPTIONS

If you find too many options confusing or overwhelming, we've taken our most popular combinations of mechanisms and platforms and given you a single item number to make ordering simple. These combinations meet the needs of most users, providing all the adjustments and flexibility to bring comfort and proper body alignment to your work environment. For additional details on the mechanisms and platforms, see pages 4 - 7.



AM17 MECHANISM



AM15 MECHANISM



AM01 MECHANISM

KEYBOARD SYSTEMS



AM01-P01S-V | Combination of AM01 mechanism with P01S-V platform.
AM15-P01S-V | Combination of AM15 mechanism with P01S-V platform.
AM17-P01S-V | Combination of AM17 mechanism with P01S-V platform.



AM01-P03S-V | Combination of AM01 mechanism with P03S-V platform.
AM15-P03S-V | Combination of AM15 mechanism with P03S-V platform.
AM17-P03S-V | Combination of AM17 mechanism with P03S-V platform.



AM01-P06S-V | Combination of AM01 mechanism with P06S-V platform.
AM15-P06S-V | Combination of AM15 mechanism with P06S-V platform.
AM17-P06S-V | Combination of AM17 mechanism with P06S-V platform.



AM01-P09T-V | Combination of AM01 mechanism with P09T-V platform.
AM15-P09T-V | Combination of AM15 mechanism with P09T-V platform.
AM17-P09T-V | Combination of AM17 mechanism with P09T-V platform.



MECHANISMS

WITH OPTIONS

Your choice in a mechanism lays the foundation for the range of motion of your platform and ultimately your comfort through added control of your work environment. Choose the mechanism that best fits the way you work and gives the range of adjustment desired to provide a full day of productivity by reducing the risk of discomfort and fatigue associated with improper posture which can result in more serious RSI injuries, shoulder and neck pain. All mechanisms are quickly adjustable for height, tilt, swivel and storability.



AM17

Low profile mechanism, Lift & Lock design allows for height adjustment without any levers or knobs. Height adjustment range of 8-1/4" (3" up, 5-1/4" down), +/- 15 degree tilt. Retractable on a 21" glide track.



AM19

Low profile extended mechanism, Lift & Lock design allows for height adjustment without any levers or knobs. Height adjustment range of 10-3/4" (4" up, 6-3/4" down), +/- 15 degree tilt. Retractable on a 23" glide track.



AM33

Fixed mount mechanism. Height adjustment range of 6", +/- 15 degree tilt with finger tip pull

MECHANISMS



AM27

Low profile Dial-a-Tilt mechanism, Lift & Lock design allows for height adjustment without any levers or knobs. Height adjustment range of 8-1/4" (2-1/2" up, 5-3/4" down). Dial-a-Tilt design with height and tilt indicator allows ease of tilt adjustment of +/- 15 degrees. Retractable on a 21" glide track.



AM57

Extended range mechanism, Lift & Lock design allows for height adjustment without any levers or knobs. Height adjustment range of 6" above & 6" below surface, +/- 15 degree tilt. Retractable on a 21" glide track.



AM01

Mechanism with Leverlock™ handle design allows for height adjustment range of 6", +/- 15 degree tilt with finger tip pull release. Retractable on a low profile ball-bearing 17" track.



AM21

Mechanism with Leverlock™ handle design allows for height adjustment range of 6", +/- 15 degree tilt with finger tip pull release. Retractable on a 17" glide track.



AM15

Economy mechanism, Single knob operation for a height range of 5 3/4" and +/- 15 degree tilt. Retractable on a 18" glide track.



AM34

Clamp mount tray with AM15 adjustable mechanism. Single knob operation for a height range of 5 3/4" and +/- 15 degree tilt. Retractable on a 18" glide track, standard with black vinyl wrist rest.



Various platform shapes and sizes define how you will work in your environment. Determine the best fit for your individual work area and preferences and create your own comfort zone. Whether you like the feel and texture of the Soft Touch Leather vinyl finish or the sleek Thin Phenolic Platforms, comfort is the key to a safe and productive office.

PLATFORMS

WITH OPTIONS

SOFT TOUCH PLATFORMS

3/4" thick wood core platform with Soft Touch Leather vinyl finish providing smooth radius corners and edges. Soft Touch finish is an excellent mousing surface while also providing non-slip properties for keyboard. Platform has an integrated perimeter lip for encompassing keyboard and mouse. Threaded metal inserts for reliability and ease of attachment to all mechanisms. Choose between a Gel, vinyl leatherette or soft fabric wrist rest options.

THIN PHENOLIC PLATFORMS

Sleek 1/4" Thin phenolic platforms provide a low profile tray with unsurpassed strength and durability qualities. These rigid Platforms are pre-drilled and countersunk for attachment of accessories and mechanisms. Platforms come standard with non-skid pads for keyboard and removable wrist pads with threaded inserts for ease of removal and reliable connection. Choose between a Gel, vinyl leatherette or soft fabric wrist rest options.



PLATFORMS

P09T – Thin Phenolic keyboard tray, 14-1/2" x 26-1/2" clipped corners which make it ideal for both corner and straight applications. Mouse forward design for added comfort. Platform is reversible for left or right handed use. Standard with wrist rests and mylar mousing surface.

Style	Leatherette	Fabric	Gel
Thin Phenolic	P09T-V	P09T-F	P09T-G

P24 – Natural wave keyboard platform, 22" wide Platform does not have a wrist rest. *(See mousing options for available attachments.)*

Style	
Soft Touch	P24S
Thin Phenolic	P24T

P04 – Rectangular Platform, 11-3/4" x 22" with tear drop mouse tray. Mouse tray with pad mounts on right. Mouse tray swivels over the 10-key area of keyboard. Standard with wrist rest.

Style	Leatherette	Fabric	Gel
Soft Touch	P04S-V	P04S-F	P04S-G
Thin Phenolic	P04T-V	P04T-F	P04T-G

P02 – Rectangular Platform, 11-3/4" x 22" with tear drop mouse tray. Mouse tray with pad, mounts left or right, swivels 360 degrees. Standard with wrist rest.

Style	Leatherette	Fabric	Gel
Soft Touch	P02S-V	P02S-F	P02S-G
Thin Phenolic	P02T-V	P02T-F	P02T-G

P10-MLD – Molded ABS plastic tray, with integrated mouse deck slides left or right and forward. Snap on Foam wrist rest. Removable for wave keyboards . 23" Wide.

P03S – Soft Touch keyboard platform, rectangular 11-3/4" x 22" with slide out mouse surface. Mouse surface slides either left or right. Standard with wrist rest.

Style	Leatherette	Fabric	Gel
Soft Touch	P03S-V	P03S-F	P03S-G

P05 / P06 – Rectangular Platform for keyboard and mouse on the same surface. Standard with wrist rest. Choose between two widths. P05 is 11-3/4" x 26" and P06 is 11-3/4" x 28"

Style	Leatherette	Fabric	Gel
Soft Touch	P05S-V	P05S-F	P05S-G
Thin Phenolic	P05T-V	P05T-F	P05T-G
Soft Touch	P06S-V	P06S-F	P06S-G
Thin Phenolic	P06T-V	P06T-F	P06T-G

P01 – Rectangular Platform, 11-3/4" x 22". Standard with wrist rest. *(See mousing options for available attachments.)*

Style	Leatherette	Fabric	Gel
Soft Touch	P01S-V	P01S-F	P01S-G
Thin Phenolic	P01T-V	P01T-F	P01T-G

P13 – Rectangular Platform 11-3/4" x 28" with clipped corners which make it ideal for both corner and straight applications. Keyboard and mouse on the same surface. Standard with wrist rest.

Style	Leatherette	Fabric	Gel
Soft Touch	P13S-V	P13S-F	P13S-G
Thin Phenolic	P13T-V	P13T-F	P13T-G





KEYBOARD DRAWERS

Cost effective solutions free up your valuable desk space. Solutions for both above and below the work surface provide an attractive and simple alternative to Articulating Keyboard Systems.



FH2-B

Under-desk keyboard drawer with 21" w x 9 1/2" d keyboard area. Black plastic tray on ball-bearing slides.



FH2-P

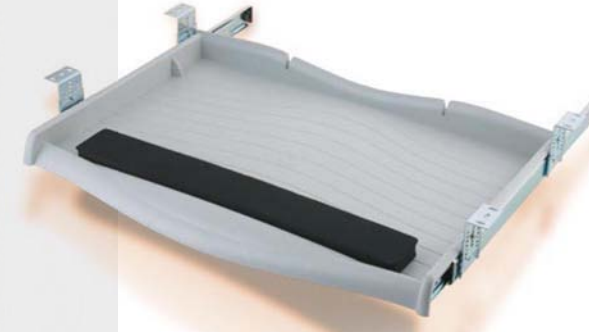
Under-desk keyboard drawer with 21" w x 9 1/2" d keyboard area. Gray plastic tray on ball-bearing slides.

KEYBOARD DRAWERS



FH-6

Under-desk keyboard drawer with slide out mouse surface. Mouse surface slides out right or left of drawer. Features 3 height and 2 tilt positions. Fabric covered foam wrist rests. Stores keyboards up to 22" wide. Finish: Charcoal Gray



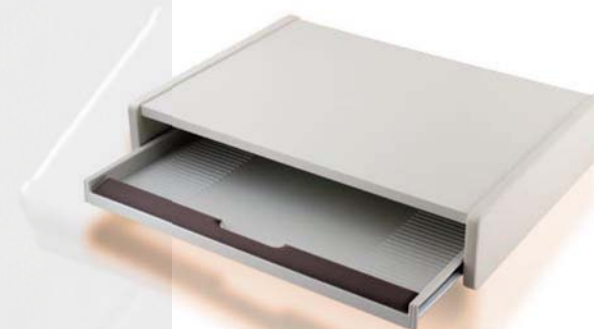
FH-5

Under-desk keyboard drawer with ball-bearing slides. Foam wrist rest. Stores keyboards up to 22" wide. Finish: Light Gray



FH-3, FH-4

Under-desk Soft Touch keyboard tray with wrist rest on ball-bearing slides. Available in 22" (FH-3) or 28" (FH-4) width. Finish: Black



FH-1

Desktop keyboard drawer 22 1/2" w x 16 1/2" d x 4 1/2" h. Wood riser with plastic pull-out drawer. Stores keyboard below your monitor. Finish: Light Gray



FH-8

Desktop keyboard drawer 29 1/4" w x 16 1/2" d x 4 1/2" h, Wood riser with pull out shelf with foam wrist rests. Stores keyboard and mouse below your monitor. Finish: Light Gray



FH-9

Desktop keyboard storage/monitor riser 22 1/2" w x 16 1/2" d x 4 1/2" h. Wood riser stores keyboard below your monitor. Finish: Light Gray



MOUSING OPTIONS

An important addition to anyone spending long hours of computer or data entry tasks. Attached mousing surfaces allow for the adjustment of mousing location to help reduce shoulder and neck pain by reducing reach by placing the mouse close to the body. Various solutions to attach to Soft Touch or Thin Phenolic trays.

MOUSING OPTIONS



SLD-100

Slide out mouse tray mounts below keyboard tray, slides out either left or right, tray extends out 8" x 8" (does not attach to Thin Phenolic keyboard trays)



SVL-500

Teardrop mouse over tray places mousing surface over 10-key area of keyboard, swivels 360 degrees, 9" diameter.



SVL-600

Tilt & swivel mouse tray attaches under keyboard tray with holster type mount for easy removal. Swivels 360 degrees, adjusts tilt +/- 15 degrees, 7" x 7" tray with black nylon mouse pad. (Second holster can be purchased for quick change for left to right handed usage)



SVL-800

Tilt & swivel teardrop mouse tray attaches to edge of Thin Phenolic trays without existing mounting holes. Swivels 360 degrees, 9" diameter, standard with wrist rest.



SVL-700

Tilt & swivel mouse tray mounts under keyboard tray, swivels 360 degrees, adjusts tilt +/- 15 degrees, 7" x 7" tray and black nylon mouse pad.



SVL-400, SVL-400BT

Teardrop swivel mouse tray mounts under keyboard tray, swivels 360 degrees, 9" diameter. Mounts to Soft Touch or Thin Phenolic keyboard trays. (Use BT model for Thin Phenolic Trays)

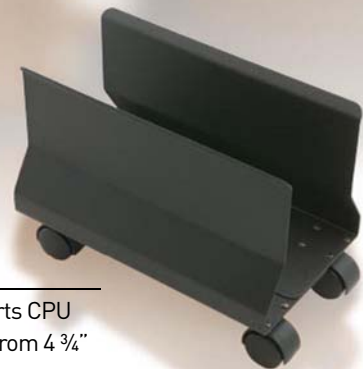
CPU HOLDERS

Whether you need additional space or added mobility, Viking offers a wide choice of CPU solutions to fit your needs.

- Protect your CPU from damaging bumping and cleaning hazards by getting it up and off the floor.
- Create more desk space by storing your CPU in one of our space saving solutions.
- Add mobility by placing your CPU in one of our roll around holders.
- Convenient access to rear of CPU for cable connections with slide-out and rotating solutions.
- Fit a wide variety of CPU sizes with easily adjustable height and width.

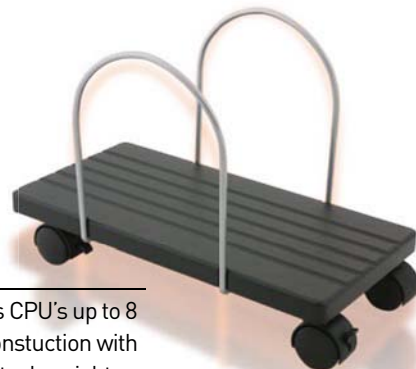
VCPU-9

Mobile CPU trolley supports CPU in a steel cradle. Adjusts from 4 3/4" - 10" wide, 4 swivel casters (2 locking).



VCPU-7

Mobile CPU cart stores CPU's up to 8 3/4" wide. Wood core construction with black vinyl cover and steel uprights, 4 swivel casters (2 locking).



CPU HOLDERS

VCPU-2

Compact side mount CPU holder. Steel construction. Supports CPU's from 3" - 5 1/4" wide.



VCPU-1

Economy CPU stand supports CPU's from 4 1/4" - 7" wide. Constructed of durable plastic.



VCPU-3

Attaches vertically to work surface, slides out 5 1/2", swivels 360 degrees for cable access, uses adjustable straps to secure CPU.



VCPU-4

Attaches vertically under worksurface, adjusts 3.5" - 9.25" wide & 15" - 24" high, slides out on 17" glide track, swivels 360 degrees for cable access. Supports 85 lbs.



VCPU-6

Attaches vertically to work surface, fixed mount, adjusts 5-3/4" - 9-3/4" in width, 12-1/2" - 20-1/2" high.



VCPU-8

Attaches vertically to work surface, slides out on 14" ball-bearing slide. Swivels to access cables. Adjusts 5-3/4" - 9-3/4" in width, 12-1/2" - 20-1/2" high.





LAPTOP SOLUTIONS

As notebook computers have made the jump from mobile computing to the standard desktop solutions for many office workers, the need to accommodate them at your desk has become much more prevalent. Whether its security, storage, or the ability to comfortably use while traveling or at your desk, we have a wide range of solutions for your notebook computer.

LPT-STD

Vertical notebook riser adjusts to put screen at proper height and is ideal for presentations. 4 built in USB ports for external devices. Direct bus power, no need for external power.



LAPTOP SOLUTIONS

LPT-LK

Security lock for Notebook. Universal design can be used with most name brand Notebooks. Consists of lock with attached cable and 2 keys.



LPT-DRW

Locking Notebook drawer. Steel construction with ball-bearing slides. Fits most notebooks up to 14" w x 11" d x 2 1/2" h.



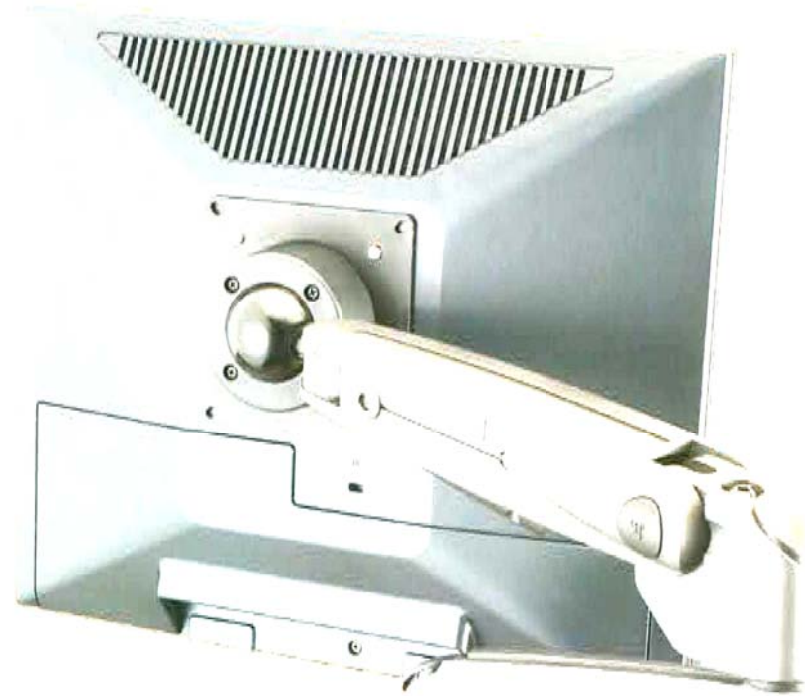
LPT-1415, LPT-1715

Adjustable Notebook platform. Adjustable mechanism pulls out from under desk. Single knob operation allows adjustments of 5 3/4" in height and +/- 15 degree tilt. Thin Phenolic platform in 14" w or 17" w x 15" d. Standard with leatherette wrist pad.



LPT-1415-TD, LPT-1715-TD

Adjustable Notebook platform with swivel mouse tray. Adjustable mechanism pulls out from under desk. Single knob operation allows adjustments of 5 3/4" in height and +/- 15 degree tilt. Thin Phenolic platform in 14" w or 17" w x 15" d. Standard with leatherette wrist pad.



FLAT PANEL MONITOR ARMS

Monitor arms are a crucial component to employee comfort, health and productivity. Current ergonomic recommendations prescribe the need to meet an individuals unique range of focal depth, viewing angle and height requirements.

Our attractive line of monitor arms can adjust to each and every need as it moves your monitor through an almost endless range of motion.

Multi point pivots and pneumatic counter balance make adjustments effortless. Move your monitor where you need it when you need it, while freeing up valuable desk space.

FLAT PANEL MONITOR ARMS



DIS-500W

Single arm, pneumatic height adjustment extends out up to 16" and height range of 21". Extension arm swivels 180 degrees. Monitor mount swivels 360 degrees, pivots and tilts. Supports monitors up to 25 lbs. Wall mount.



DIS-501W

Dual extension arm with pneumatic height adjustment extends to 23" and height range of 21". Each extension arm swivels 180 degrees or more. Monitor mount swivels 360 degrees, pivots and tilts. Supports monitors up to 25 lbs. Wall mount.



DIS-500

Single arm, pneumatic height adjustment extends out up to 16" and a height range of up to 21". Extension arm swivels 360 degrees. Monitor mount swivels 360 degrees, pivots and tilts. Supports monitors up to 25 lbs. Standard with clamp and grommet mount.

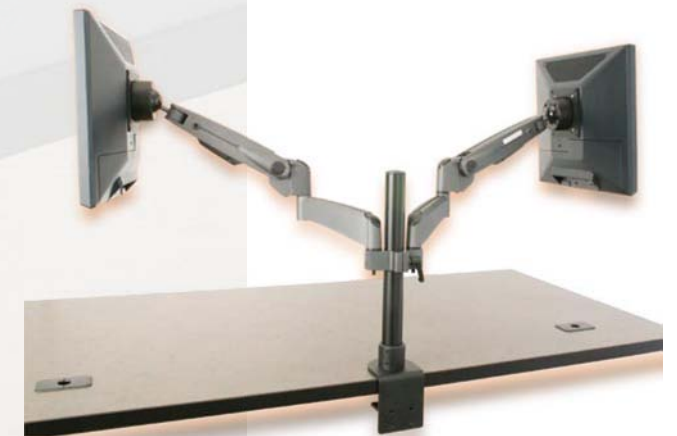


DIS-501

Dual extension arm with pneumatic height adjustment extends out up to 23" and a height range of up to 21". Each extension arm swivels 360 degrees. Monitor mount swivels 360 degrees, pivots and tilts. Supports monitors up to 25 lbs. Standard with clamp and grommet mount.

DIS-502

Dual Flat Panel Monitor arm with dual extensions. Pneumatic height adjustment extends out up to 23" and height range of 21". Each extension arm swivels 360 degrees. Monitor mount swivels 360 degrees, pivots and tilts. Supports monitors up to 25 lbs. Pole height 14" with optional mount by grommet or clamp.





FLAT PANEL MONITOR ARMS

Today's visual world often requires the need for multiple monitors to display intensive amounts of data. Whether its two or eight, these solutions will safely and securely support your requirements, while adding functionality and esthetics. Extension arms come standard with integrated wire management clips. Standard with both 75mm and 100mm VESA mounts.



DIS-C CLAMP MOUNT



DIS-D DESK TOP STAND



DIS-G GROMMET MOUNT

FLAT PANEL MONITOR ARMS

DIS-2X1-V

Mounts two flat panel monitors vertically to one pole. Arms tilt, swivel and rotate. Pole height 28" with optional mount by grommet, clamp or desk top stand. Supports up to two 19" flat panel monitors.



DIS-1X2

Mounts two flat panel monitors horizontally to one pole. Arms tilt, swivel and rotate. Pole height 14" with optional mount by grommet, clamp or desk top stand. Supports up to two 19" flat panel monitors.



DIS-1X3

Mounts three flat panel monitors to one pole. Arms tilt, swivel and rotate. Pole height 14" with optional mount by grommet, clamp or desk top stand. Supports up to three flat panel monitors up to 17" wide.



DIS-2X2

Mounts four flat panel monitors to one pole. Arms tilt, swivel and rotate. Pole height 28" with optional mount by grommet, clamp or desk top stand. Supports up to four 19" flat panel monitors stacked two on top and two below.



DIS-2X3

Mounts six flat panel monitors to one pole. Arms tilt, swivel and rotate. Pole height 28" with optional mount by grommet or clamp. Supports up to six 17" flat panel monitors stacked three on top and three below.



DIS-2X4

Mounts eight flat panel monitors on two poles. Arms tilt, swivel and rotate. Pole height 28" with optional mount by grommet, clamp or desk top stand. Supports up to eight 19" flat panel monitors stacked four on top and four below.





FLAT PANEL MONITOR ARMS

A versatile line of multi-pivot components, made of attractive aluminum alloy castings. Support for one to six monitors. Swing your display over a wide range of movement, optimizing your viewing angle, focal depth and monitor's height. All mounts come standard with both 75mm and 100mm VESA standard mounts.



GROMMET



CLAMP

FLAT PANEL MONITOR ARMS

MTR-150

Wall mount single arm with single extension extends 15", swivels, tilts & rotates 360 degrees. Weight capacity 22 lbs.

MTR-825

Single arm with single extension extends 16", swivels, tilts & rotates 360 degrees. Pole height 15" with clamp mount standard or grommet optional. Weight capacity 22 lbs.

MTR-850

Single arm with dual extension extends 21", swivels, tilts & rotates 360 degrees. Pole height 15" with clamp mount standard or grommet optional. Weight capacity 17 lbs.

MTR-875

Double horizontal arms with dual extension extends 21", swivels, tilts & rotates 360 degrees. Pole height 15" with clamp mount standard or grommet optional. Supports two monitors up to 17 lbs. each arm.

MTR-3X

Mounts three flat panel monitors to one pole. Unit comes with two dual extension arms and one single pole mount. Arms tilt, swivel and rotate. Pole height 15" with clamp mount standard or grommet optional. Supports three monitors up to 17 lbs. each.

MTR-4X

Mounts four flat panel monitors to one pole. Unit comes with four dual extension arms. Arms tilt, swivel and rotate. Pole height 27" with clamp mount standard or grommet optional. Supports four monitors up to 17 lbs. each.

MTR-5X

Mounts five flat panel monitors to one pole. Unit comes with four dual extension arms and one single pole mount. Arms tilt, swivel and rotate. Pole height 27" with clamp mount standard or grommet optional. Supports five monitors up to 15 lbs. each.

MTR-6X

Mounts six flat panel monitors to one pole. Unit comes with four dual extension arms and two single pole mounts. Arms tilt, swivel and rotate. Pole height 27" with clamp mount standard or grommet optional. Supports six monitors up to 13 lbs. each.

FLAT PANEL MONITOR ARMS

Simple budget minded solutions for your Flat Panel Display. Three models for single screen support for wall or desk.

MTR-100

Economy wall mount, swivels 35 degrees, tilts & rotates 160 degrees. Weight capacity 13 lbs.



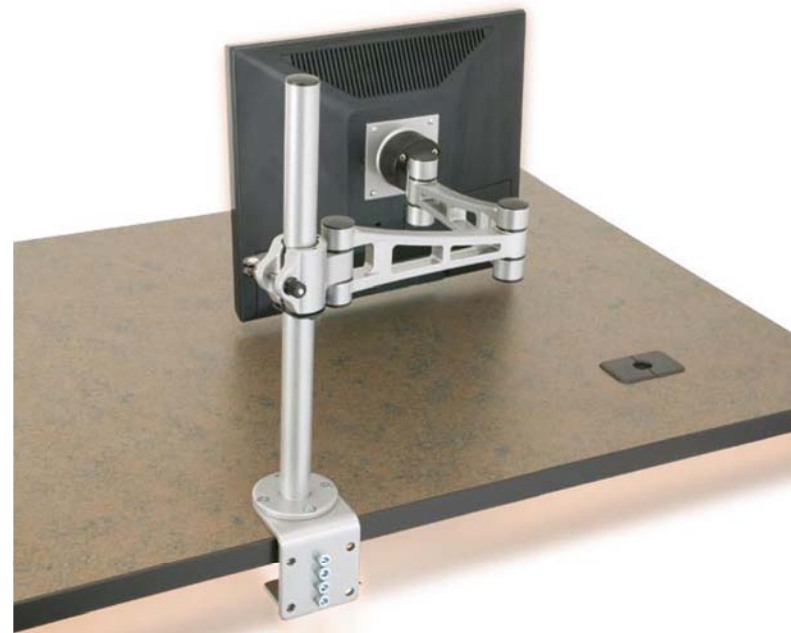
MTR-750W

Wall mount single arm with dual extension extends 21" and swings 180 degrees, Monitor mount swivels, tilts & rotates 360 degrees. Weight capacity 17 lbs.



MTR-750

Single arm with dual extension extends 21" and swings 360 degrees. Monitor mount swivels, tilts & rotates 360 degrees. Pole height 15", available with clamp mount only. Weight capacity 17 lbs.



TASK LIGHTS

Often overlooked, but one of the three most important elements for a comfortable work area, task lighting is critical for a productive work environment.

Of those surveyed, over 75% of workers prefer more control over their lighting, while 48% of workers perceive eyestrain as the most serious office hazard. In light of the importance of task lighting to the overall effectiveness of a work area, we have focused on putting together three flexible lighting solutions for desks and workstations.

These three models will illuminate your environment while allowing you to pivot, extend, raise and lower, putting the light where you need it, when you need it. Available with multiple mounting options, single or dual arm, and an optional dimmer switch for halogen model.



TSK-100

Single arm task light with 18 watt compact fluorescent lamp infinitely adjustable to precisely position the light where you need it. Electronic ballast, Hi/Lo switching, Parabolic louver with up to 15" of extension. (Shown with weighted base)



TSK-200

Dual arm task light with 18 watt compact fluorescent lamp infinitely adjustable to precisely position the light where you need it. Electronic ballast, Hi/Lo switching, Parabolic louver with up to 30" of extension. (Shown with weighted base)



TSK-500

Dual arm task light with 35 watt frosted halogen bulb infinitely adjustable to precisely position the light where you need it. On/Off switching with up to 30" of extension. (Shown with weighted base)

BASE CHOICES



TSK-D

Weighted base, 9" diameter.



TSK-B

Bolt through mount. Requires 3/8" hole in surface.



TSK-C

Clamp mount. Mounts on to edge of 1" to 1 3/8" thick surface.



TSK-DM

Dimmer switch allows infinite control of your lighting needs. To be used as a option with model TSK-500 halogen lighting.

FOOT RESTS

Footrests increase comfort, lessen fatigue, and improve concentration by reducing strain and fatigue on legs, back and neck from long hours at your desk. Increases circulation through healthier positioning of legs with multiple tilt and height variations.

FT-500

Adjustable height Footrest with 3 position height adjustment from 4" to 7". Full range of tilt up to 45 degrees. Molded plastic massage surface.

FT-100

3" Adjustable Footrest supports your feet on a 1/2" black vinyl covered board.

FT-200

6" Adjustable Footrest supports your feet on a 1/2" black vinyl covered board.

FT-303

3" Adjustable Footrest supports your feet on a 3/4" board with a ribbed rubber mat.

FT-407

6" Adjustable Footrest, supports your feet on a 3/4" board with a ribbed rubber mat.

DESIGNED TO ELEVATE AND SUPPORT THE FEET, SO NECK AND LEG TENSION IS EASED.

CORNER MAKERS

Create a corner work surface by sliding a Corner Maker onto a 90 degree corner workstation. Allows for the attachment of standard articulating keyboard systems while giving the user the added benefit of increased focal depth range for monitor placement.

GTY-100B, GTY-100P

Rectangular, 22" wide x 18" deep, powder-coated steel sleeve. For 1 1/4" thick work surfaces.

Finish: (Available in Black (B) or Light Grey (P) finish)

GTY-R1B, GTY-R1P

Radius, 22" wide x 12" deep, powder-coated steel sleeve. For 1 1/4" thick work surfaces.

Finish: (Available in Black (B) or Light Grey (P) finish)

The drawing illustrates how the corner maker simply slides over a 90 degree worksurface and creates a new work area ideal for keyboard mechanisms and additional focal depth for monitors.

COPY HOLDERS

Move your paper to eye level, helping to reduce neck strain, and eye fatigue from overhead lighting glare. Choose from desktop or flex arm models.

CH-3

Copyholder mounts to edge of desk with clamp. Flexible arm allows for extension, rotation and tilt of tray. Designed for letter and legal sized documents.
Finish: Light Gray

CH-9

Copyholder with weighted base. Tray rotates and tilts. Designed for letter or legal sized documents.
Finish: Light Gray

CH-1

Wood copy stand. Designed to accommodate larger documents, spreadsheets or books. 1" lip and 2 angle adjustment options. 19 1/2" w x 11" d.
Finish: Light gray



PENCIL DRAWERS

Convenient pencil drawers mount to the underside of most work surfaces. Get the little items off your desk and stored for easy retrieval. Attractive molded trays with individual compartments for easy separation and organization of items.

5001

Radius pencil drawer. Designed for when limited depth is available. When attached the drawer swivels out from underneath your desk for easy access. Mounts in area 13 1/2" w x 8" d x 1 1/2" h.
Finish: Black



5002

Compact pencil drawer. Designed for when limited width is available. Sturdy plastic drawer construction with ball-bearing slides, mounts in area 14 3/8" w x 17 1/2" d x 2" h.
Finish: Black



5003

Sturdy plastic pencil drawer with ball-bearing slides, mounts in area 22 1/4" w x 16 1/4" d x 2" h.
Finish: Black



WRIST/MOUSE PADS

Wrist rests help encourage a neutral wrist position while minimizing pressure points and discomfort.

Wrist rest pads shown above are available in many lengths in Gel with Lycra Fabric, or foam with leatherette vinyl or soft fabric covering. See price list for available sizes and specifications.

MP-RD-F

Round foam mouse pad. Integrated raised lip around perimeter. 8 1/4" diameter pad with adhesive backer.

MP-SQ

Rectangular foam mouse pad 8 1/2" w x 7" d.

WR-MS

Gel palm rest for mouse. Black nylon cover. 4 3/4" wide

MP-TR-G

Gel mouse pad with Polyurethane base, black nylon fabric covering. Overall size 9" w x 10" d.

MP-TR-F

Mouse pad with integrated palm rest. Foam with black nylon fabric covering. Overall size 9" w x 10" d.

MP-RD-M

Round mouse surface. Textured Mylar surface. 8" diameter pad with adhesive backer.

TERMS AND CONDITIONS

PRICING

Prices shown are U.S. dollar List Prices. These prices do not include charges for freight, installation, taxes, etc., and are subject to change without notice. We reserve the right to modify our product designs and pricing without prior notice.

ORDERING INFORMATION

Call customer service at 1-800-328-8385, (952) 469-3405 or FAX (952) 469-4503. You will need to know the model number, color (if an option) and quantity to place your order.

CANCELLATIONS AND CHANGES

Cancellations and changes must be made within 24 hours after receipt of initial order. Any changes or cancellations after that time may be subject to a 15% cancellation charge. Custom products may be subject to work in process charges as well as any cost of materials incurred for the order in addition to the cancellation charge.

CREDIT

On established credit, payment for the full invoice amount is due within thirty (30) days of the date of the invoice. In case of any discrepancies, such as shortages, only that portion may be deducted and the balance paid. Merchandise is shipped on open account only after credit limits have been established. Customers who have not established credit should forward a payment of 50% of the net order value with their order. The balance is due prior to shipment.

DAMAGE AND CLAIMS

All merchandise has been carefully inspected and packed prior to shipment. Upon receipt of an order, the following procedures should be followed. Under ICC regulations, claims reported after 15 days may be refused, so please follow the guidelines below.

When a Carrier Arrives:

- Inspect all cartons for damage and verify carton quantity.

- Do not refuse merchandise damaged in transit.
- Record damages and/or shortages on the freight bill.
- Sign only for the number of items you receive.
- If you give the delivering carrier a signed receipt for a shipment without noting problems or discrepancies; the carrier is relieved of further responsibility.

If product is found damaged upon opening the cartons.

- Notify the carrier at once and request an inspection.
- Confirm the request in writing within 15 days of date of delivery.
- Hold cartons and units for carrier's inspection.

FREIGHT

All products are shipped F.O.B. Lakeville, Minnesota or St. Croix Falls, Wisconsin. Freight quotes are estimates only; we are not responsible for actual charges in excess of an estimate.

WARRANTY

Viking Acoustical Corporation warrants its products to be free from defects in materials or workmanship for a period of one year from date of shipment. This warranty excludes damage resulting from shipment, storage, alteration or misuse of the product. During the warranty period, Viking will repair or replace free of charge any standard Viking product, which has proven to be defective. Written notice of the defect must be given to Viking within the applicable warranty period. No credit will be given for any repairs to damaged or defective items without the written approval of Viking. We reserve the right to require that any such item be returned to the factory in adequate packaging for inspection.

THIS WARRANTY IS THE ONLY WARRANTY MADE BY VIKING, AND ALL OTHER WARRANTIES, INCLUDING IMPLIED WARRANTIES OF MARKETABILITY AND FITNESS FOR A PARTICULAR PURPOSE ARE

HEREBY DISCLAIMED. SHIPPING DAMAGE AND/OR DAMAGE INCURRED DURING INSTALLATION, REPAIR OR REPLACEMENT AS WELL AS DAMAGE RESULTING FROM MISUSE, NEGLIGENCE, ACCIDENT OR ALTERATIONS ARE EXCLUDED AND WILL NOT BE PAID.

TERMS

Net 30 days from date of invoice, past due amounts are subject to an 18% (Eighteen percent) annual finance charge. The order acknowledgment is intended to be the final expression of the contract between the Customer and Viking regarding the products that are included in the confirmation.

RETURNS & RESTOCKING

Returns must have prior authorization. To request a return, call or write our Customer Service Department. Once approved, your return will be assigned an authorization number and you will receive further instructions. A copy of the authorization must accompany the return or it will be refused. All returns must be shipped freight prepaid. A minimum charge of 25% will be assessed on all returns to cover the cost of inspection, refurbishing, and restocking. If any excessive damage is evident, credit will be determined by market value. Returns must be made in original cartons with proper inner packing. All return requests must be made within 60 days from the date of invoice, and products must be returned within 30 days from the date of return authorization.

STORAGE

If a dealer or customer refuses to, or is unable to accept delivery of any shipment, Viking will transfer the shipment to storage. Transfer and storage charges must be paid by the dealer or customer.

MEASURES AND WEIGHTS

All measures and weights are approximate and are subject to change without notice. Viking accepts no responsibility for final charges.

VIKING

VIKING ACOUSTICAL CORPORATION

21480 Heath Avenue
Lakeville, Minnesota 55044
952-469-3405
800-328-8385
Fax: 952-469-4503
Web: www.vikingusa.com

